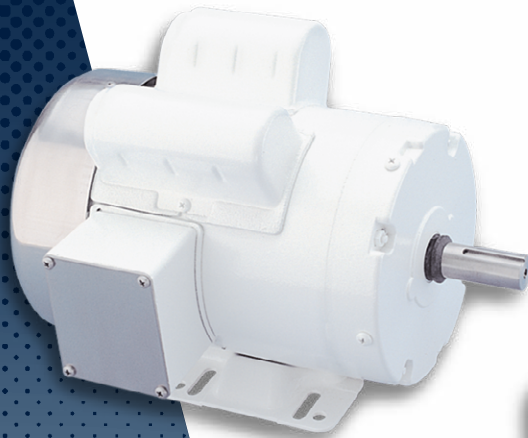




**marathon**<sup>™</sup>  
Motors

PowerWash<sup>™</sup>  
Washdown Motors

SB563



A Regal Brand

**REGAL**

# PowerWash™ WASHDOWN MOTORS



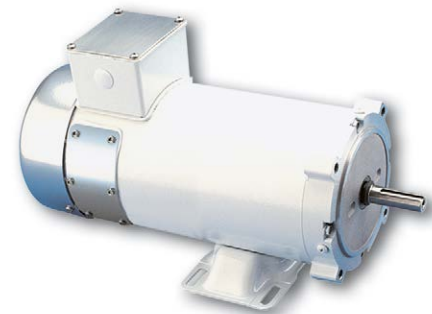
## PowerWash™ XT WASHDOWN DUTY

### SUPERIOR PERFORMANCE IN WET, HUMID AREAS

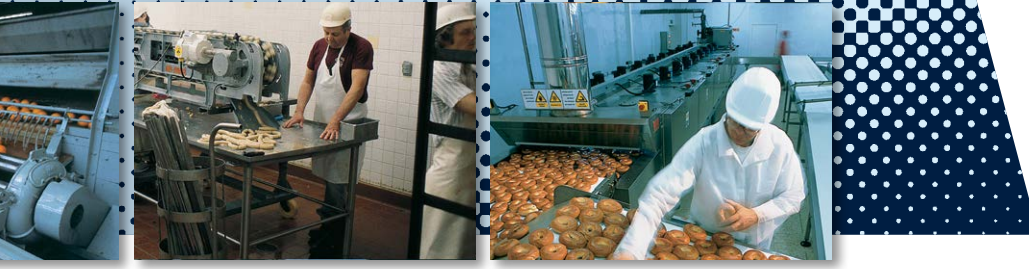
- Single and Three Phase, White Epoxy, Totally Enclosed
- 56-215T Frame
- MAX GUARD® Class F insulation system
- 1.15 Service Factor on sinewave (1 and 3 Phase), 1.0 Service Factor on IGBT power (3 Phase)
- Suitable for use on VFD, 10:1 Variable torque, 10:1 (TEFC) or 1000:1 (TENV) Constant Torque (3 Phase)
- IP55, TENV and TEFC enclosures
- Single phase motors have electronic encapsulated starting switch that is impervious to moisture
- 303 Stainless steel shaft with spring loaded contact seals in each endshield (Drive end only on TENV motors)
- Stainless steel conduit box cover, nameplate, fan guard (TEFC only) and hardware
- Cast oversized conduit box with high temperature Nitrile gaskets and threaded entrance
- Internal corrosion resistant coatings on frame, base, endshields, rotor and stator
- Rated 60/50 hertz, 190/380
- UL Recognized, CSA Certified and CE Mark
- USDA-approved, white epoxy RUST-OLEUM® paint
- Rigid Base, C-Face Footless, and C-Face Footed (Rigid Base) models available
- JM Footed C-Face Footed (Rigid Base)
- Jet Pump 56J C-Face Footless and C-Face Footed (Rigid Base)
- Brake Motor C-Face Footless and C-Face Footed (Rigid Base)



Single phase  
1/3 HP through 1-1/2 HP  
3600 and 1800 RPM  
115/208-230 Volts



Three phase  
1/4 HP through 10 HP  
3600 and 1800 RPM  
208-230/460 Volts and 575 Volt



## PowerWash<sup>™</sup> SXT WASHDOWN DUTY

### BUILT TO WITHSTAND DEMANDING WASHDOWN ENVIRONMENTS

- Single and Three Phase, All Stainless Steel, Totally Enclosed
- 56-145T Frame
- MAX GUARD<sup>®</sup> Class F insulation system
- 1.15 Service Factor on sinewave (1 and 3 Phase), 1.0 Service Factor on IGBT power (3 Phase)
- Suitable for use on VFD, 10:1 Variable torque, 10:1 (TEFC) or 1000:1 (TENV) Constant Torque (3 Phase)
- IP55, TENV and TEFC enclosures, 115/208-230 (1 Phase) and 208-230/460 (3 Phase)
- Single Phase Motors have encapsulated starting switch that is impervious to moisture
- Double sealed ball bearings
- 303 stainless steel shaft with spring loaded contact seals in each end (Drive end only on TENV)
- 300 Series Stainless steel external construction: frame, endshields, conduit box, mounting base and hardware for superior corrosion resistance
- Internal corrosion resistant coatings on rotor and heavy polyester varnish on the stator
- Nitrile Buna - N gaskets and seals on conduit box, through bolts and endshields
- Rated 60/50 hertz, 190/380
- UL Recognized, CSA Certified and CE Mark
- 1/3 HP through 2 HP, 1800 RPM - C-Face Footless
- 1/3 HP through 3 HP, 3600 and 1800 RPM - C-Face Footed (Rigid Base)



Single & three phase  
1/3 HP through 3 HP  
3600 and 1800 RPM



TENV

# PowerWash™ WASHDOWN MOTORS

## PowerWash™ SXT-PLUS WASHDOWN DUTY

### MAXIMUM PERFORMANCE IN CORROSIVE OR CRITICALLY CLEAN ENVIRONMENTS

- Single and Three Phase, Stainless/BISSC, Totally Enclosed
- 56C-215TC Frame
- MAX GUARD® Class F insulation system
- 1.15 Service Factor on sinewave (1 and 3 Phase), 1.0 Service Factor on IBGT power (3 Phase)
- Suitable for use on VFD, 10:1 Variable torque, 10:1 (TEFC) or 1000:1 (TENV) Constant Torque, 1.0 (3 Phase)
- IP55, TENV and TEFC enclosures, 115/208-230 (1 Phase) and 208-230/460 (3 Phase)
- Single Phase Motors have encapsulated starting switch that is impervious to moisture
- Double sealed ball bearings with moisture resistant, high temperature grease
- 300 Series Stainless steel external construction: frame, endshields, shaft, conduit box, mounting base and hardware for superior corrosion resistance
- Viton® o-rings, shaft seals, and gaskets for superior sealing against chemicals
- Hydrophobic breather in OP endshield and conduit box equalize air pressure
- BISSC Certified for baking industry
- UL Recognized, CSA Certified and CE Mark
- Single Phase 1/3 HP through 3600 and 1800 RPM, C-Face Footless and C-Face Footed (Rigid Base)
- JM C-Face Footed (Rigid Base)
- Brake Motor C-Face Footed (Rigid Base)
- IEC B5 and B14 Flanges, Footless and Footed (Rigid Base)
- 1/3 HP through 2 HP C-Face Footless and C-Face Footed (Rigid Base)



**NEW**

## PowerWash™ EXTREME WASHDOWN DUTY

- Totally Encapsulated Motor Design
- Same Features as the SXT-Plus Design listed above, except Hydrophobic Breather
- Potted Lead Entrance
- 1/3 HP through 2 HP C-Face Footless and C-Face Footed (Rigid Base) (3 Phase)



# marathon™



100 E. Randolph Street, PO Box 8003  
Wausau, WI 54401-8003  
PH: 715-675-3311

[www.marathonelectric.com](http://www.marathonelectric.com)

A Regal Brand

# REGAL

[www.regalbeloit.com](http://www.regalbeloit.com)